

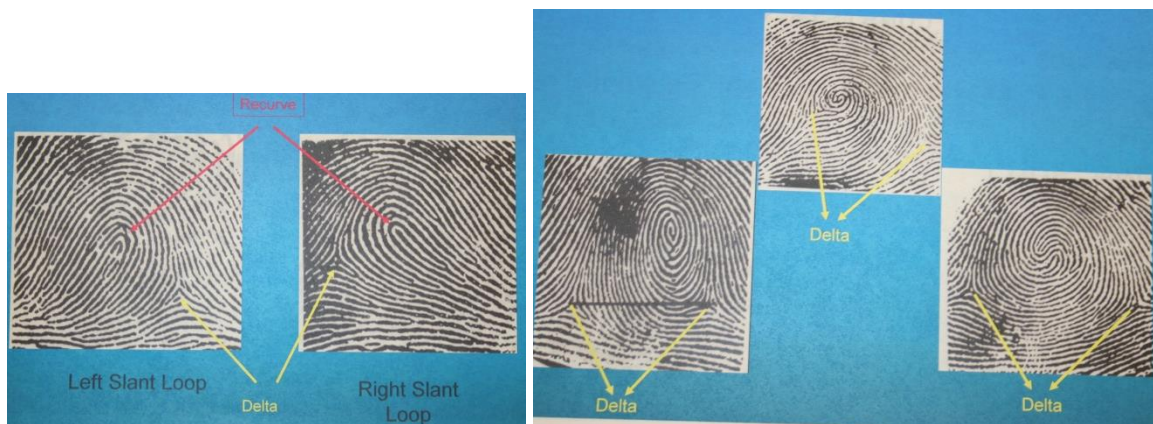
Goggles!

Time Management: The worst problem elementary competitors have. Divide and conquer where you can, combine when needed.

Powders: Use the powder analysis chart for identification.

Tools: Well plates are great, but you have to wash the corners out. Spot plates are easier to clean but it is hard to see white powders in a white plate. Consider disposable Dixie cups or condiment cups if you have troubles. Toothpicks and popsicle sticks are great for scooping and mixing, Do not double dip. Cross contamination will give you false positives for your tests.

Fingerprints: Loops, Whorls, Arches are the 3 main types. Deltas help define them. Minutiae is basically everything else.



Left Slant Loop, Right Slant Loop

Whorls (have 2 deltas)



Plain arches

Tented arches

Glass:

This is strictly matching from observable characteristics. PLEASE be careful handling glass. You may see a variety of things, be prepared to recognize the following characteristics to differentiate between samples:

color, translucence vs opacity, iridescence vs non-iridescence (monochrome), texture, pattern, thickness, irregularities, layering